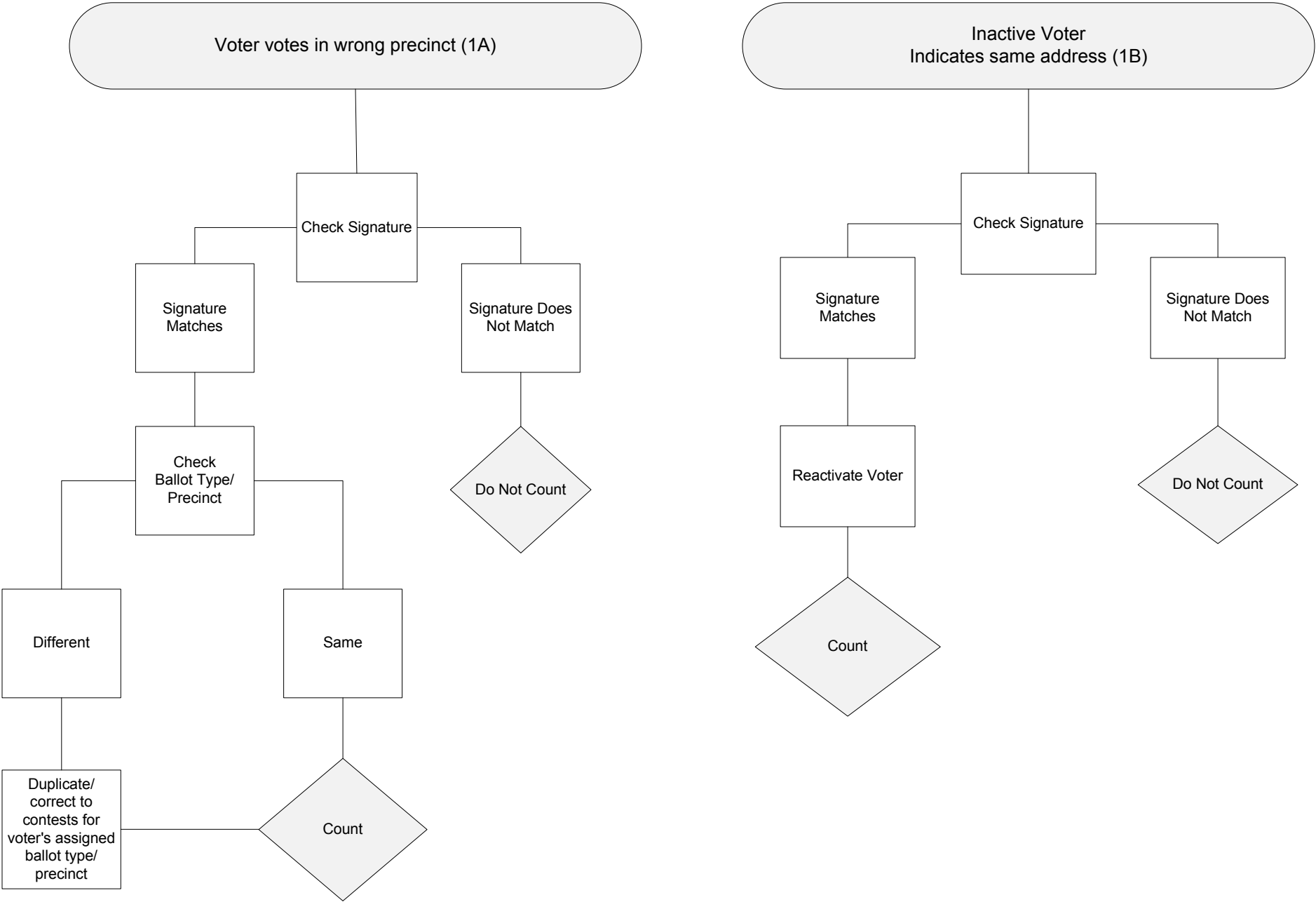


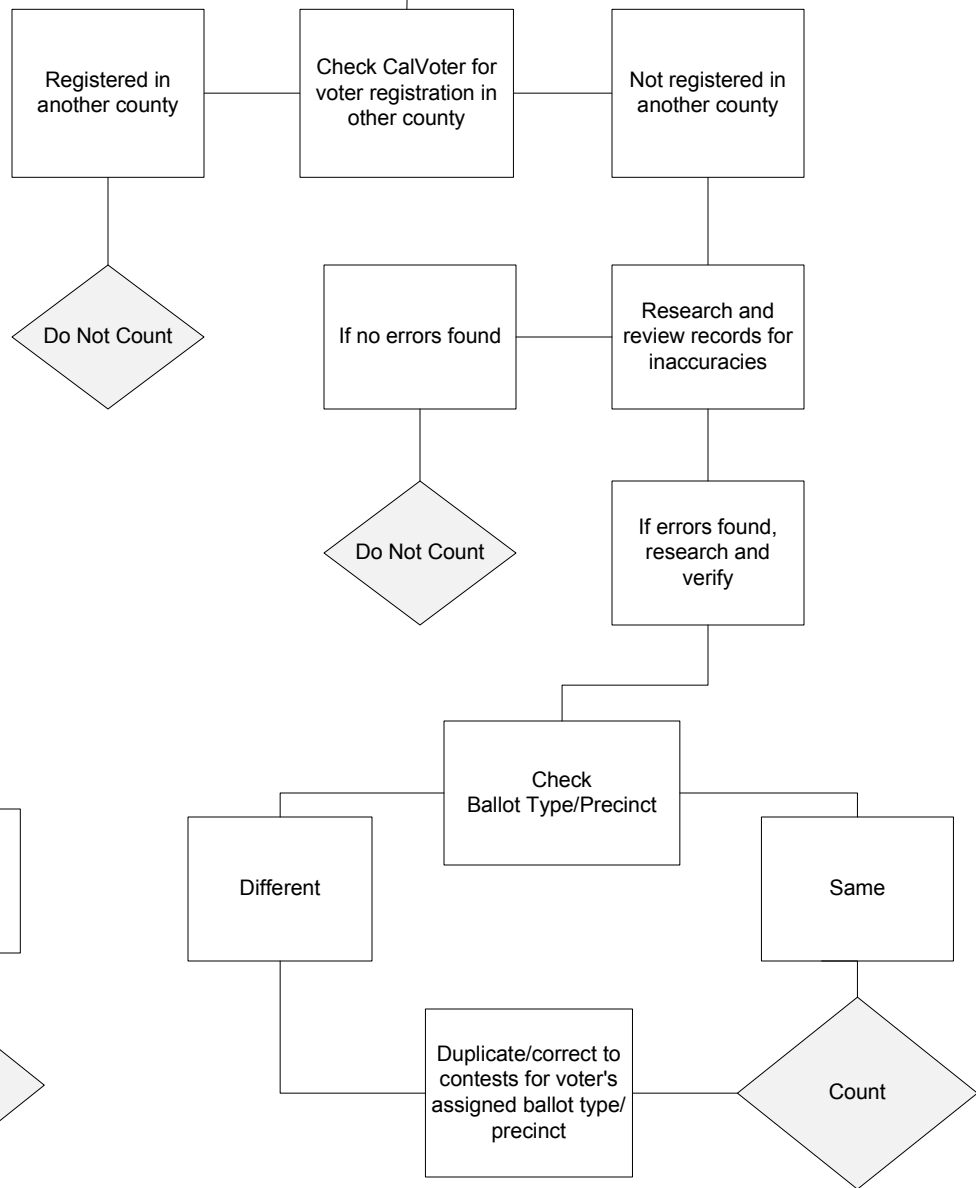
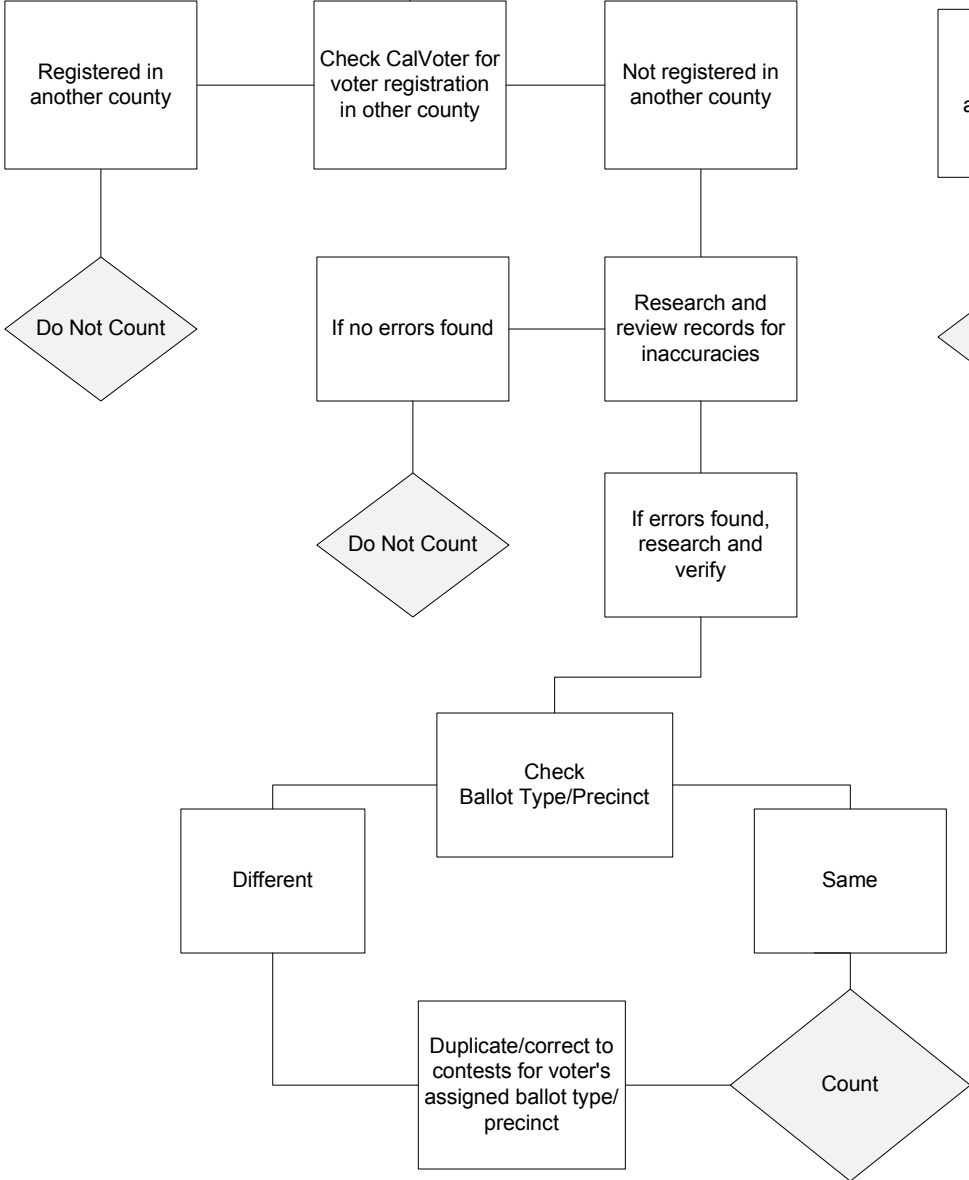
# Registered Voter



# Registered Voter

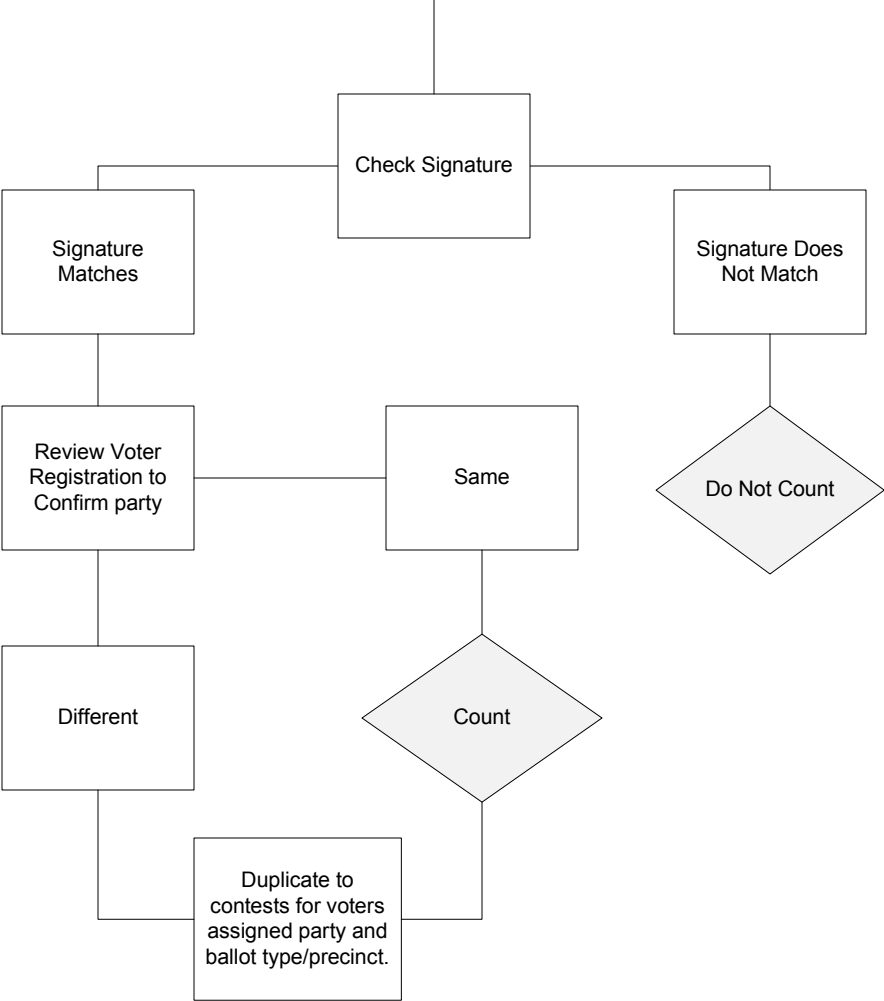
Voter cancelled due to ACS, DMV, NCOA (1C)

Voter cancelled through SOS (1D)

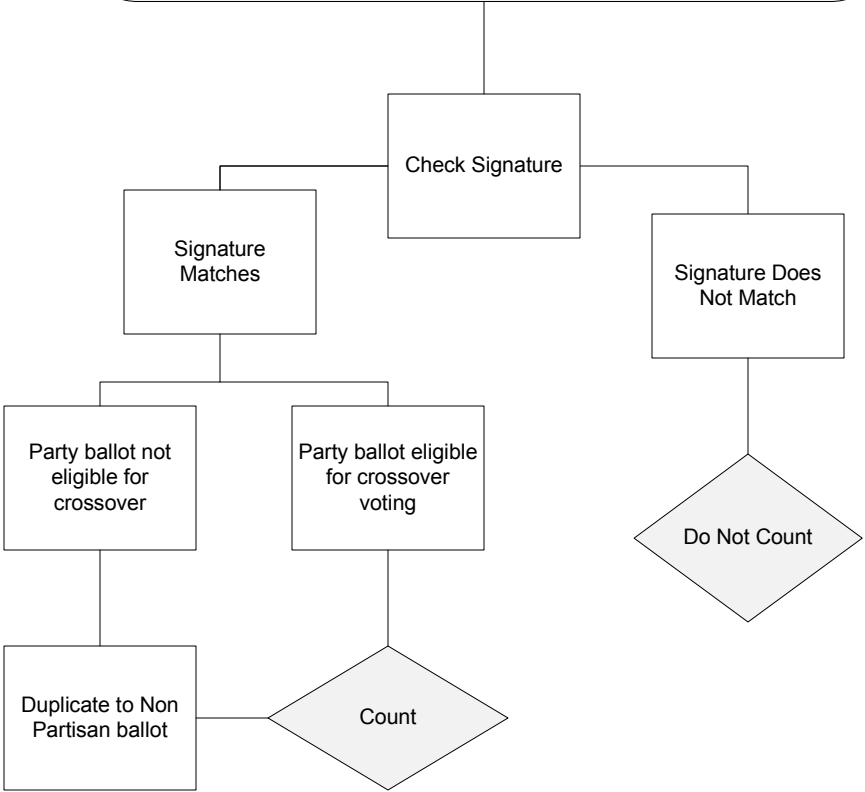


# Registered Voter

Voter votes different party ballot (1G)

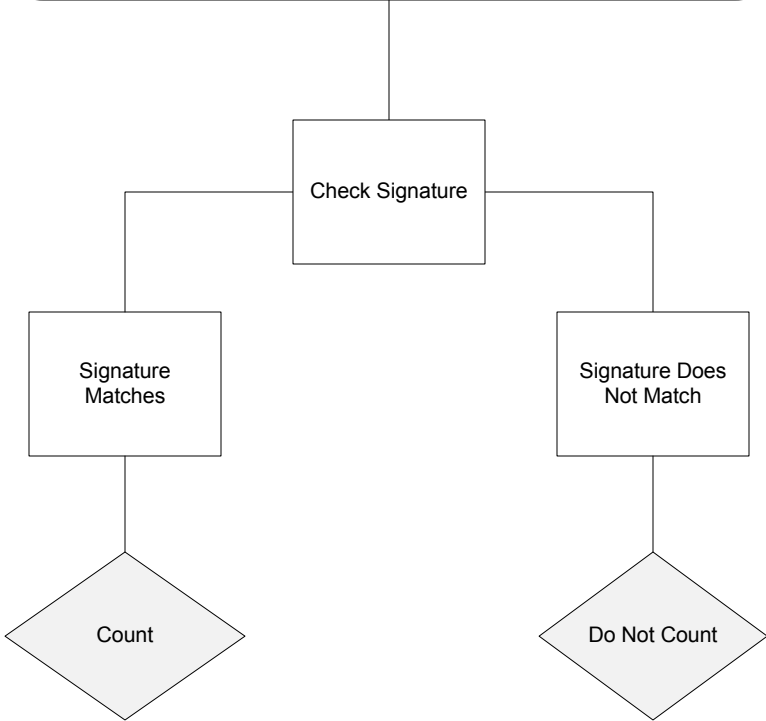


Non Partisan voter votes party ballot (1H and 1I)

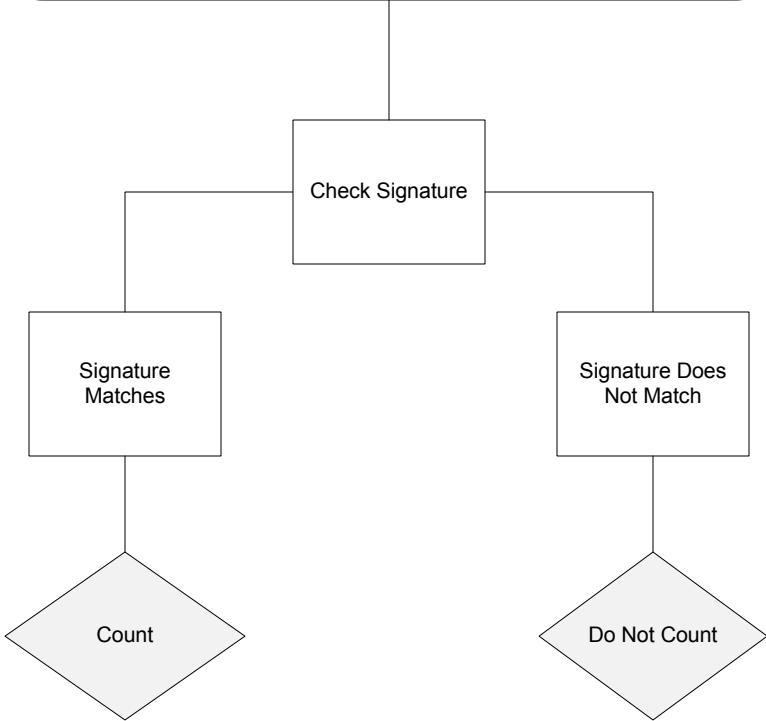


Registered Voter

H.A.V.A. Pended Regular Voter in Roster – no I.D. (1E and 1F)

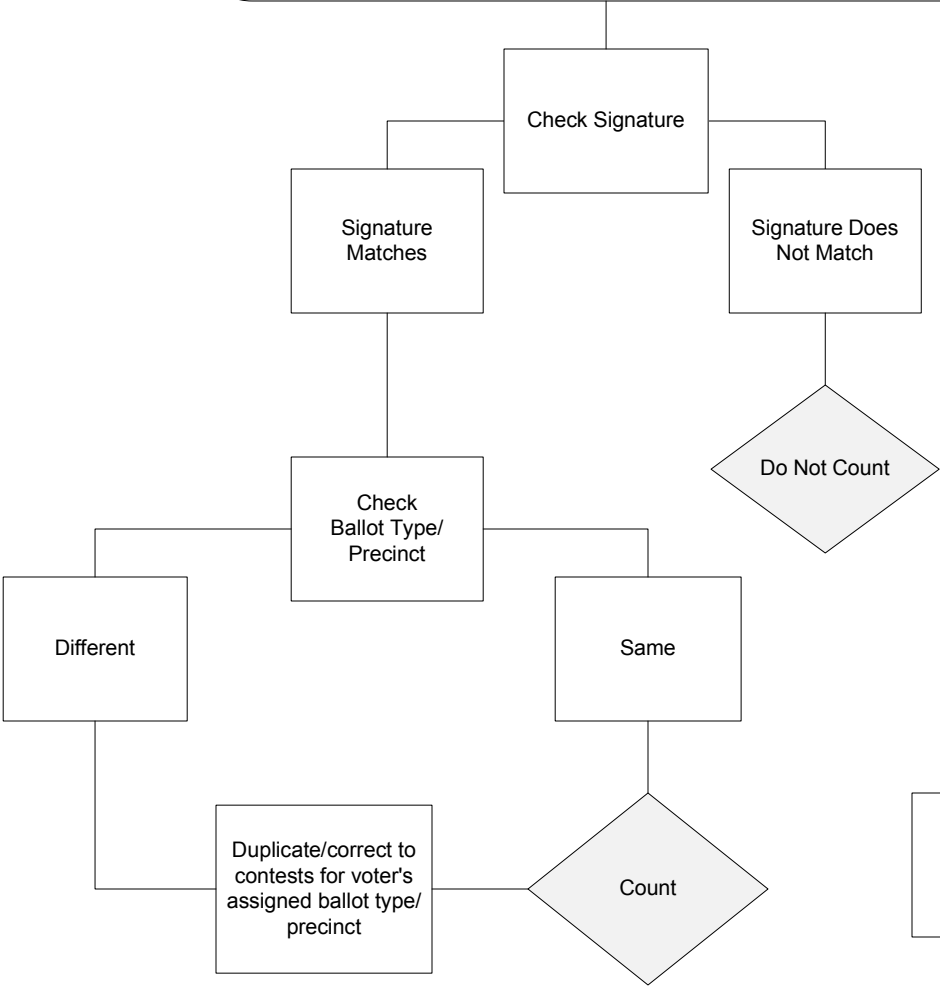


H.A.V.A. Pended VBM Voter – no I.D. (2D)

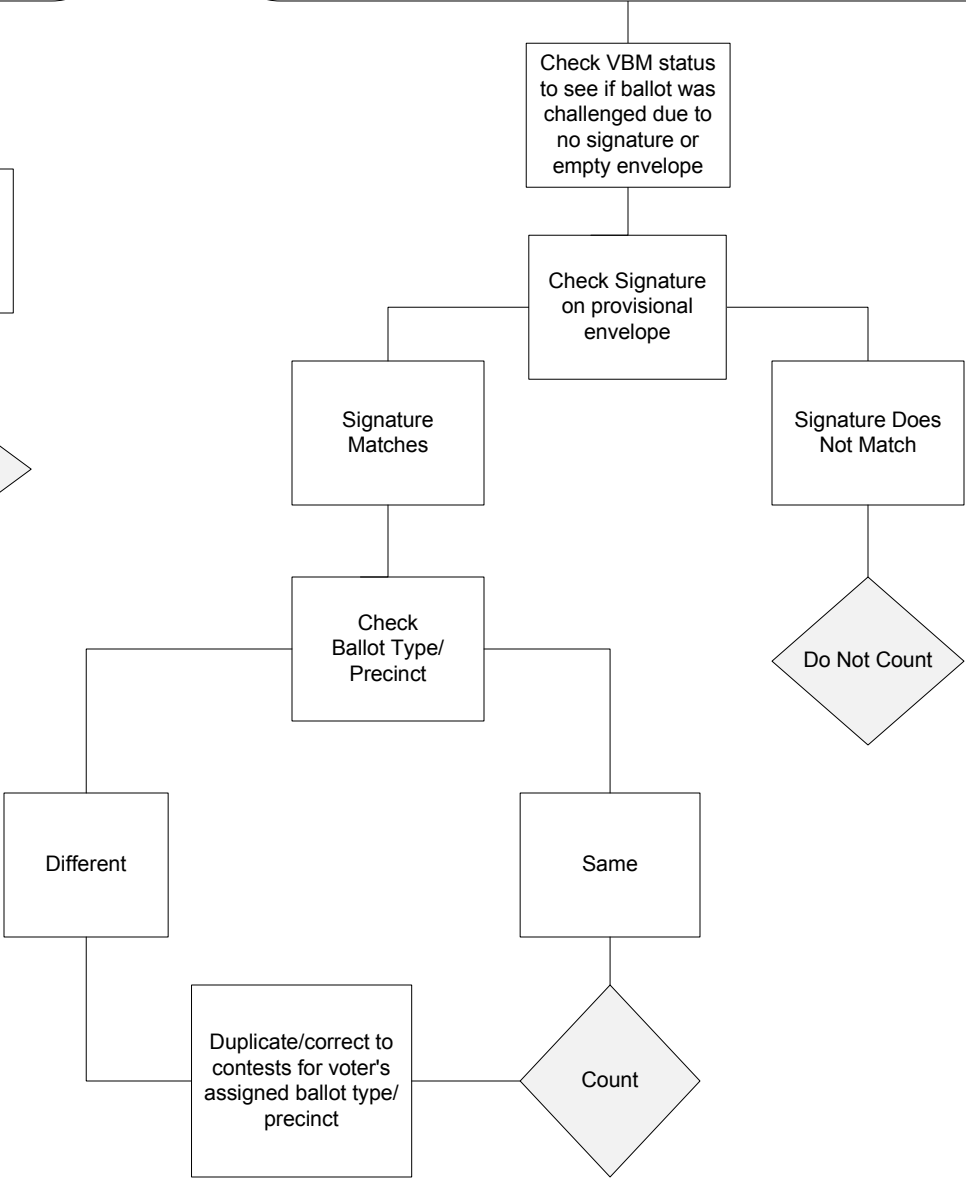


# Registered Voter

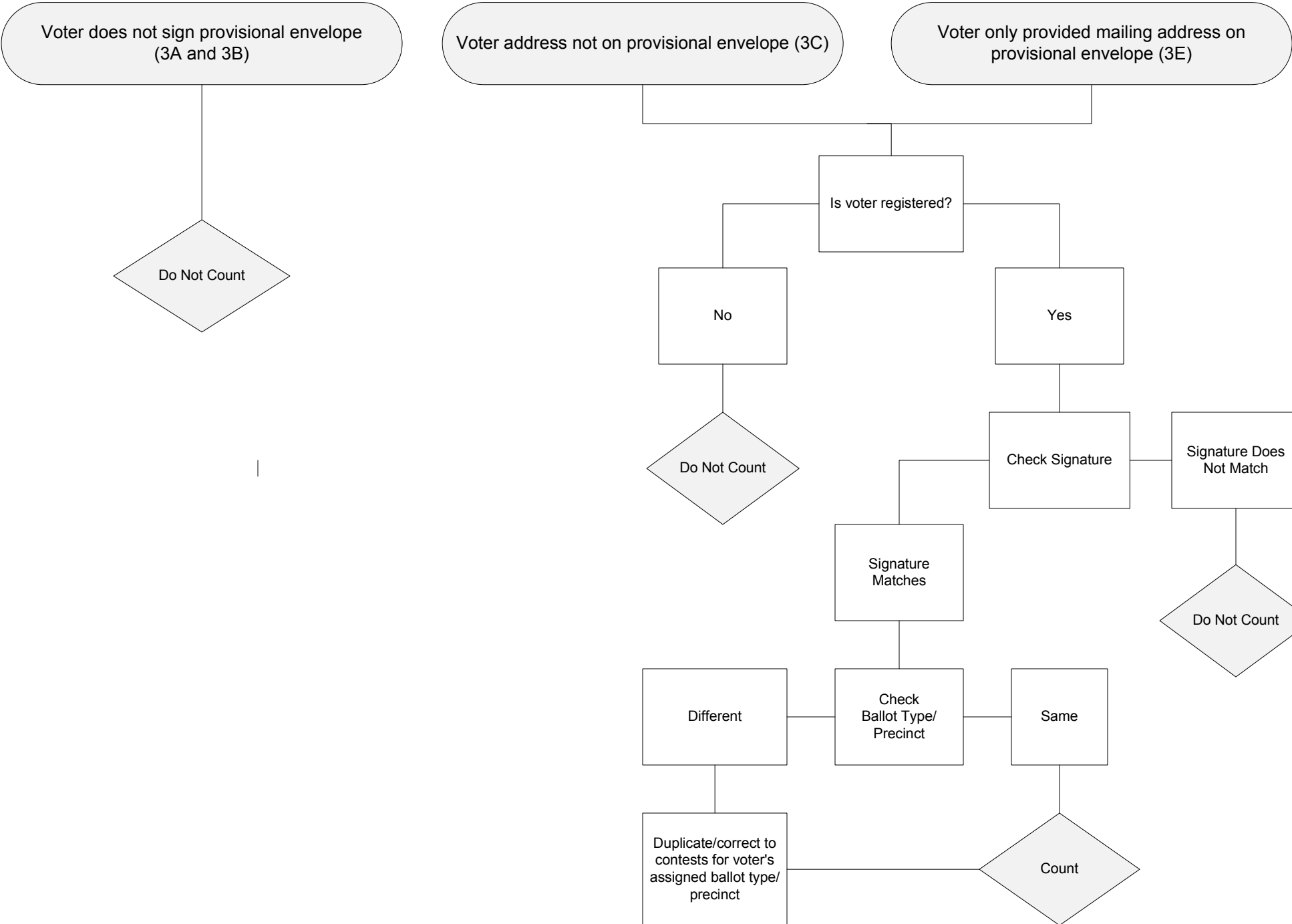
VBM voter does not surrender VBM ballot (2A and 2B)



VBM voter returned VBM ballot but did not sign identification envelope and voted provisional ballot at precinct (2C)



# Registered Voter



# Registered Voter

